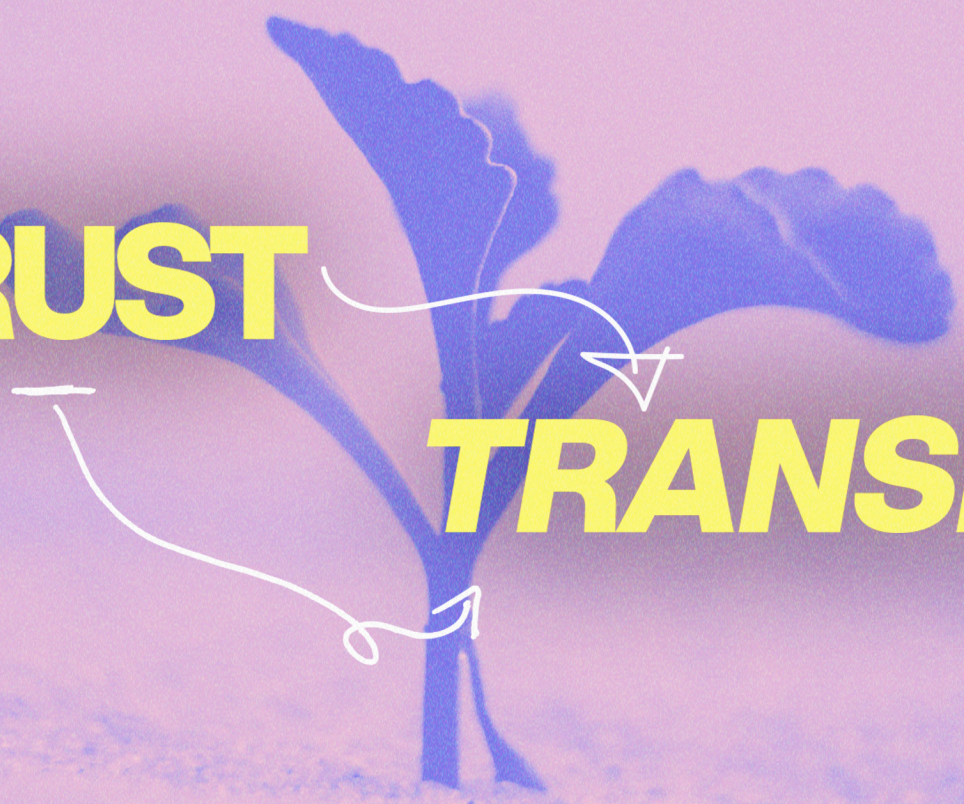


TRUST

TRANSFER





HOW TO USE THIS GUIDE

THIS GUIDE IS TO BE USED PRIMARILY IN YOUR JOURNEY GROUP SETTING TO WALK YOUR GROUP THROUGH THE SERIES OF TEACHINGS AT JOURNEY CHURCH TO APPLY GOD'S WORD IN THE CONTEXT OF BIBLICAL COMMUNITY. BUT THIS GUIDE COULD ALSO BE USED IN A SMALLER SETTING, LIKE IN A ONE-ON-ONE DISCIPLESHIP RELATIONSHIP, OR EVEN COULD BE FOUND HELPFUL FOR A PERSONAL STUDY AS AN INDIVIDUAL TAKES IN THE TEACHINGS AND SEEKS TO APPLY THE BIBLE TO THEIR REAL LIFE.

IN THIS GUIDE, ONE WILL FIND AN OVERVIEW PAGE TO GET A BIG-PICTURE VIEW OF THE STUDY. THEN, NEXT, A RESOURCES PAGE WITH HYPERLINKS TO TAKE THEM TO OTHER HELPFUL RESOURCES THAT OUR TEAM FOUND HELPFUL TO THEM IN WRITING THE TEACHINGS. THEN, THE REST OF THE GUIDE IS QUESTIONS TO FRAME UP CONVERSATIONS AROUND GOD'S WORD.

OUR TEAM PRAYS THAT THE TEACHING OF GOD'S WORD, AS WELL AS THIS GUIDE, WILL ENCOURAGE, CHALLENGE, AND STRENGTHEN YOUR FAITH AS YOU SEEK TO FOLLOW JESUS WHEREVER HE LEADS.



HOW TO TRANSFER OUR TRUST TO CHRIST

TRUST IS THE FOUNDATION OF ALL OF LIFE. IF WE CANNOT TRUST, WE CANNOT LIVE THE WHOLE LIVES THAT WE WERE DESIGNED TO LIVE IN FULL FREEDOM THAT CHRIST DIED FOR. SO, IN THIS MINI-TEACHING SERIES, WE WILL SIT ON ONE TEXT FROM THE GOSPEL OF LUKE (LUKE 12:13-34), WHERE JESUS TEACHES TO ONE MAN FROM ONE DEMAND THAT HE HAS OF JESUS THAT TURNS INTO A TEACHING SCENE TO THE CROWD AND THEN TO HIS DISCIPLES SPECIFICALLY. SO THE BIG QUESTION IS WITH ALL OF YOUR LIFE AND EVERYTHING THAT MAKES UP YOU. DO YOU TRUST HIM, REALLY?



RESOURCES

RELATED BOOKS

TRUST (BOOK), DR. HENRY CLOUD // REASON: DOCTOR CLOUD GIVE THE CORE OF WHAT TRUST IS, HOW TO BUILD IT, AND WHAT TO DO WHEN YOUR TRUST IS BROKEN. THIS IS FOR ALL OF THOSE WHO STRUGGLE TO TRUST IN GENERAL. IF WE CAN'T TRUST ANYONE, HOW DO WE THINK WE ARE EVER GOING TO BE ABLE TO TRUST GOD IN EVERY AREA OF OUR LIVES?

THE PROBLEM OF JESUS (BOOK), MARK CLARK // REASON: IN THIS BOOK, MARK CLARK COVERS THE TENSIONS WITH HOW JESUS CALLS US TO REALLY LIVE AND WHAT IT TRULY MEANS TO FOLLOW HIM. WE ALL NEED TO WRESTLE WITH THE REALITIES AND DEPTH OF HOW JESUS CALLS US TO DENY OURSELVES, TAKE UP OUR CROSS AND FOLLOW HIM.

THE 7 ARROWS BIBLE STUDY METHOD, TGC COURSE // REASON: FOR ALL LEVELS OF BIBLE STUDENTS TO STUDY GOD'S WORD ON THEIR OWN OR IN A GROUP SETTING.



WEEK ONE: THE MYTH OF MINE LUKE 12:13-15

APPLICATION & DISCUSSION QUESTIONS:

ICEBREAKER: ***note: Consider making the icebreaker a group role to figure out who in your group is good at these to make it fun for the group each week.*

1. What is your favorite material thing you own and why?
2. Consider using a box of **story cards** to get to know each other better. Reach out to Groups Leadership if your group does not have a box of story cards.

RESPONSE

HERE ARE SOME POSSIBLE WAYS TO APPLY AND OBEY WHAT WE'VE SEEN IN GOD'S WORD THIS WEEK. IT IS IMPORTANT TO BE DOERS OF THE WORD AND NOT HEARERS ONLY.



1. WHAT DOES THIS PASSAGE SAY?



2. WHAT DID THIS PASSAGE MEAN TO ITS ORIGINAL AUDIENCE?



3. WHAT DOES THIS PASSAGE TELL US ABOUT GOD?
• WHY DOES GOD CARE ABOUT WHAT WE HAVE?



4. WHAT DOES THIS PASSAGE TELL US ABOUT MAN?
- WHY ARE WE SO LIKELY TO PLACE OUR TRUST IN OTHER PLACES?



5. WHAT DOES THIS PASSAGE DEMAND OF ME?
- HOW CAN WE FIGHT THE MYTH OF MINE?



6. HOW DOES THIS PASSAGE CHANGE THE WAY I RELATE TO PEOPLE?



7. WHAT DOES THIS PASSAGE PROMPT ME TO PRAY TO GOD?

QUESTION FOR REFLECTION: WHERE DO YOU STRUGGLE WITH THE MYTH OF MINE?

DIVING DEEPER THIS WEEK: CONSIDER READING **PSALM 24 & DEUTERONOMY 8**.
USE THE 7 ARROWS METHOD TO BIBLE JOURNAL. ***IF YOU NEED HELP, SEE THE
RESOURCES PAGE ON PAGE 3.



WEEK TWO: THE JESUS SCANDAL LUKE 12:16-21

APPLICATION & DISCUSSION QUESTIONS:

ICEBREAKER: ***note: Consider making the icebreaker a group role to figure out who in your group is good at these to make it fun for the group each week.*

1. If you could hang out with any cartoon character, who would it be and why?
2. Consider using a box of **story cards** to get to know each other better. Reach out to Groups Leadership if your group does not have a box of story cards.

RESPONSE

HERE ARE SOME POSSIBLE WAYS TO APPLY AND OBEY WHAT WE'VE SEEN IN GOD'S WORD THIS WEEK. IT IS IMPORTANT TO BE DOERS OF THE WORD AND NOT HEARERS ONLY.



1. WHAT DOES THIS PASSAGE SAY?



2. WHAT DID THIS PASSAGE MEAN TO ITS ORIGINAL AUDIENCE?



3. WHAT DOES THIS PASSAGE TELL US ABOUT GOD?



4. WHAT DOES THIS PASSAGE TELL US ABOUT MAN?



5. WHAT DOES THIS PASSAGE DEMAND OF ME?



6. HOW DOES THIS PASSAGE CHANGE THE WAY I RELATE TO PEOPLE?



7. WHAT DOES THIS PASSAGE PROMPT ME TO PRAY TO GOD?

QUESTION FOR REFLECTION: WHAT ARE YOU SPENDING TIME PREPARING IN YOUR LIFE?

DIVING DEEPER THIS WEEK: CONSIDER READING **JOHN 6 & MARK 10**
USE THE 7 ARROWS METHOD TO BIBLE JOURNAL. ***IF YOU NEED HELP, SEE THE
RESOURCES PAGE ON PAGE 3.



WEEK THREE: **TIME TO TRANSFER** **LUKE 12:22-34**

APPLICATION & DISCUSSION QUESTIONS:

ICEBREAKER: ***note: Consider making the icebreaker a group role to figure out who in your group is good at these to make it fun for the group each week.*

1. What is your morning drink? Please give in detail.
2. Consider using a box of **story cards** to get to know each other better. Reach out to Groups Leadership if your group does not have a box of story cards.

RESPONSE

HERE ARE SOME POSSIBLE WAYS TO APPLY AND OBEY WHAT WE'VE SEEN IN GOD'S WORD THIS WEEK. IT IS IMPORTANT TO BE DOERS OF THE WORD AND NOT HEARERS ONLY.



1. WHAT DOES THIS PASSAGE SAY?



2. WHAT DID THIS PASSAGE MEAN TO ITS ORIGINAL AUDIENCE?



3. WHAT DOES THIS PASSAGE TELL US ABOUT GOD?



4. WHAT DOES THIS PASSAGE TELL US ABOUT MAN?



5. WHAT DOES THIS PASSAGE DEMAND OF ME?



6. HOW DOES THIS PASSAGE CHANGE THE WAY I RELATE TO PEOPLE?



7. WHAT DOES THIS PASSAGE PROMPT ME TO PRAY TO GOD?

QUESTION FOR REFLECTION: WHERE DO YOU NEED TO PRACTICAL TRANSFER YOUR TRUST TO JESUS?

DIVING DEEPER THIS WEEK: CONSIDER READING **LUKE 10 & ACTS 5**.
USE THE 7 ARROWS METHOD TO BIBLE JOURNAL. ***IF YOU NEED HELP, SEE THE
RESOURCES PAGE ON PAGE 3.